

**LUTHER BURBANK SPORTS COMPLEX
SACRAMENTO, CALIFORNIA**



COMPLEX HIGHLIGHTS

- Construction 2010 (funded)
- A \$23 million community benefit sports complex
- New football field, track, lighting, seating, sports facilities buildings
- 3 new soccer fields, 2 baseball fields, 2 softball fields, concessions kiosk

For more information, please contact:

KEN NOACK, JR.
SENIOR VICE PRESIDENT
ken.noack@grubb-ellis.com
916.418.6025
License #00777705

KELLY RIVETT
VICE PRESIDENT
kelly.rivett@grubb-ellis.com
916.418.6020
License #01249433

The information contained herein was obtained from third parties, and it has not been independently verified by the real estate brokers. Buyer/tenants should have the experts of their choice inspect the property and verify all information. Real estate brokers are not qualified to act as or select experts with respect to legal, tax, environment, building construction, soils-drainage or other such matters.



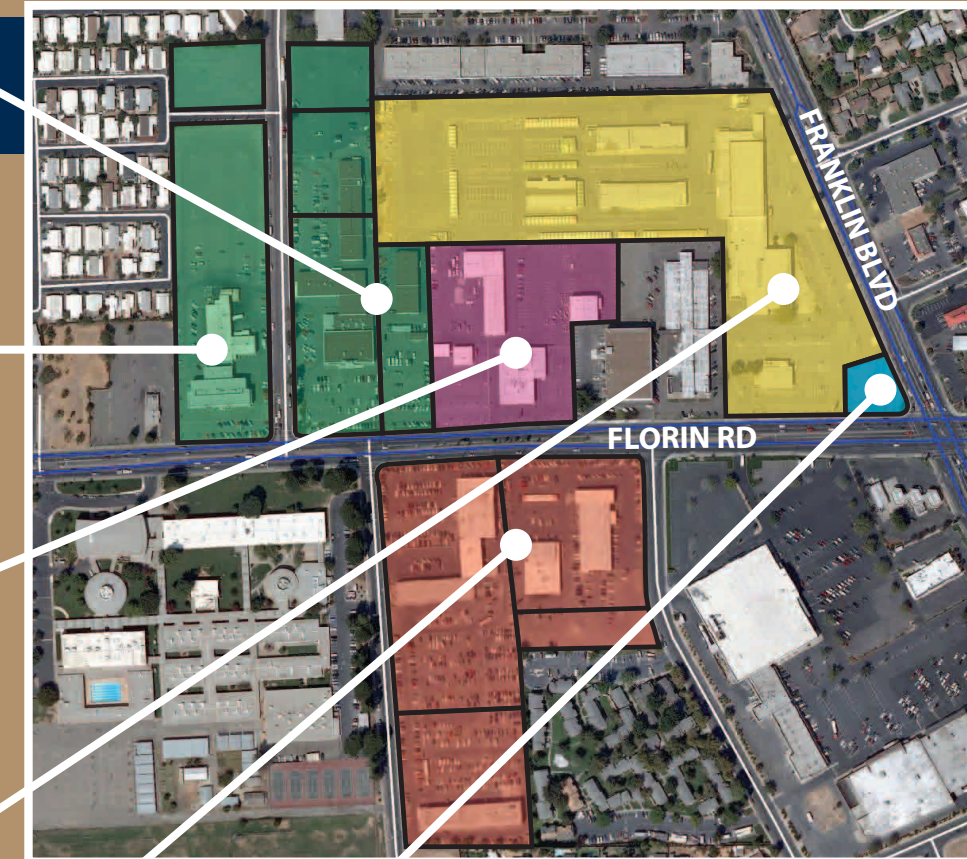
GRUBB & ELLIS

From Insight to Results
1610 Arden Way, Suite 195
Sacramento, CA 95815
916.418.6000 tel
916.418.0231 fax
www.grubb-ellis.com
License #00812184

±45 ACRE INFILL

REDEVELOPMENT OPPORTUNITY

WEST OF FRANKLIN BLVD ALONG FLORIN RD
SACRAMENTO, CA



For more information, please contact:

KEN NOACK, JR.
SENIOR VICE PRESIDENT
ken.noack@grubb-ellis.com
916.418.6025
License #00777705

KELLY RIVETT
VICE PRESIDENT
kelly.rivett@grubb-ellis.com
916.418.6020
License #01249433



GRUBB & ELLIS

From Insight to Results

PROJECT HIGHLIGHTS

- City Identified "Shovel Ready" Program Project
- Zoned C-2, Mixed Uses Allowed with CUP
- \$23 Million Community Sports Complex at Luther Burbank High School (See back of brochure)
- Prime In-fill Development Opportunity

±1 Ac

±1.5 Ac

±1.5 Ac

±1.5 Ac

±3 Ac

±3 Ac

±1.5 Ac

±4.7 Ac

±14 Ac

±5 Ac

FLORIN RD

FRANKLIN BLVD

LIGHT RAIL

**LUTHER BURBANK
HIGH SCHOOL
SPORTS COMPLEX
(SEE BROCHURE BACK)**

±4.5 Ac

±3.6 Ac

±.8 Ac

±2.8 Ac

For more information, please contact:

KEN NOACK, JR.
SENIOR VICE PRESIDENT
ken.noack@grubb-ellis.com
916.418.6025
License #00777705

KELLY RIVETT
VICE PRESIDENT
kelly.rivett@grubb-ellis.com
916.418.6020
License #01249433



±45 ACRE INFILL REDEVELOPMENT SACRAMENTO, CALIFORNIA